

House & Land



From

\$415,470

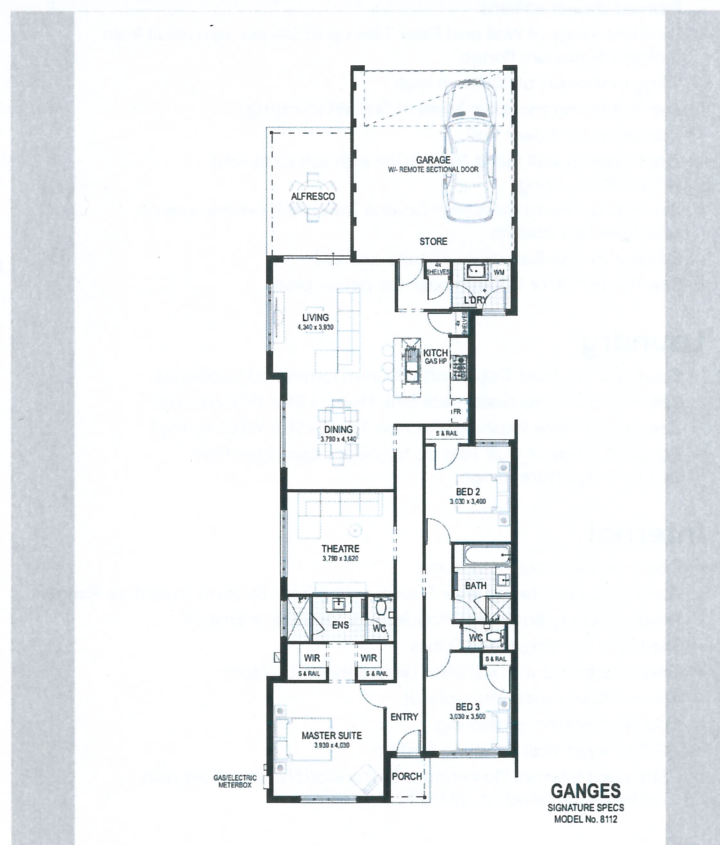
Lot 26

Street Name Cosmic rise

Suburb Landsdale (The Crest)

Specifications

- Stone Benchtops to Kitchen
- GTEK Smart Finishing System
- 300mm x 300mm tiling to wet areas
- Premium SMEG 900mm European appliances
- Choice of 6 Contemporary Elevations
- Glass pivot doors to showers
- Luxury toilet suites
- Flush fit pelmet garage door
- Soft closing cupboards throughout
- Mixer taps throughout
- China basins
- Luxury switches & power points
- Buildfast Building Timeframe Guarantee
- Lifetime structural warranty
- Site costs estimates included



3 2 2 10m 209sqm

Ronny Kaplanian
0410-615-597 | email ronnyk@impressions.net.au


Impressions
The Home Builder